

Class

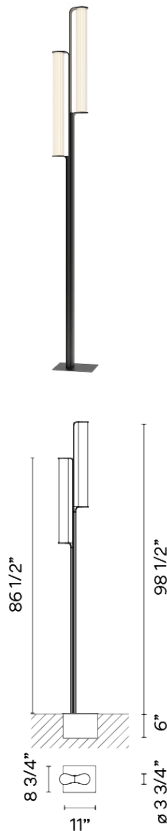
2815

VIBIA

Design By Sebastian Herkner

Class is an outdoor pillar lantern in which matter and light come together in a single body. The matte black stem contrasts with the fluted surface of the glass cylinders. The light bathes a wide area of outdoor space thanks to its double asymmetry.

Spec sheet



Finish 11 Black
NCS S 8500-N

LED 2700 K

Dimming 0-10V / TRIAC

Installation type Remote

LED CRI>90 1980 lm 141
2700 K

Driver Constant Current 700 120-277 V V
50-60 Hz HZ

Dimmable LED IP65 Multi-volt

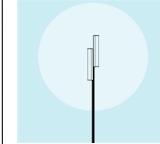
Application Outdoor

Packaging 2 Box
114.96 m x 12.6 m x 12.4 m
Gross weight 125.11
Net weight 111.89
Vol. 12.0954

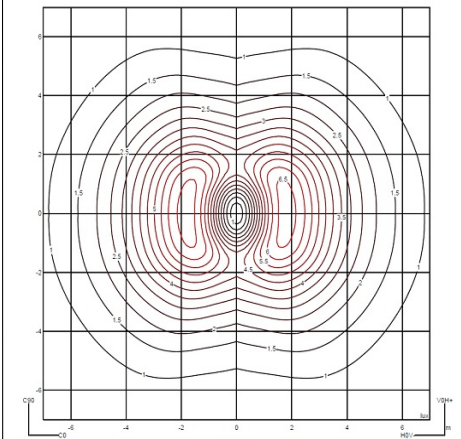
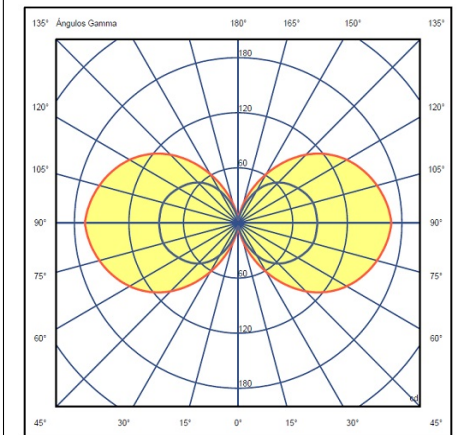
Lighting effect

Volumetric Diffuser

Subtly directed, diffused light that generates a soft hierarchy of light on to the illuminated surface



Photometric Data



Efficiency 94.86 lm/W
Coordination System CG
Total Flux 1328.07 lm
Maximum Value 169.66 cd

Min. Quantity, upcharge and extra lead time apply

All of our products come with a two year standard warranty. Check US & Canada Term and Condition sales@vibia.com

VIBIA, INC.

Office / Oficina
272 Fernwood Ave. Edison, NJ 08837. USA

International T 732 417 1700
Spain / Portugal T +34 934 796 970

sales@vibia.com
www.vibia.com/us/usa